

# Technical data sheet

Clamp clip 2056, W-foot, single, metal pressure trough, FT

Item number: 1188316



Clamp clip with W-foot, metal pressure trough with rounded edges to protect the cable. For vertical and horizontal mounting of 1 single cable on angle irons with shaft length 40 mm. With 1-start screw thread on pressure trough, universal hexagonal screw head WAF10, with slot and cross recess. Suitable for mounting indoors and outdoors. We recommend the use of a counter-trough.



**St** Steel

**FT** Hot-dip galvanised

## Master data

Item number	1188316
Type	BS-W1-M-40 FT
Description 1	Clamp clip 2056
Manufacturer	OBO
Dimension	34-40mm
Material	Steel
Surface	Hot-dip galvanised
Surface standard	DIN EN ISO 1461
Smallest sales unit	100
Unit of quantity	Piece
Weight	8.83 kg
Weight unit	kg/100 pc.
CO2 Footprint (GWP) Cradle-to-Gate	0,2288 kg CO2e / 1 Piece

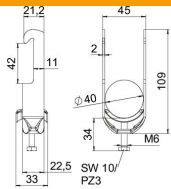
# Technical data sheet

Clamp clip 2056, W-foot, single, metal pressure trough, FT

Item number: 1188316



## Dimensions



Length	22.5 mm
Width	45 mm
Height	109 mm
Plate thickness	2 mm
Dimension A	22.5 mm
Dimension B	45 mm
Dimension C	33 mm
Dimension G (mm)	M6
Dimension H	109 mm
Dimension L	34 mm
Dimension t	2 mm

## Technical data

Number of cables/pipes	1
For pipe diameter, max.	40 mm
For pipe diameter, min.	34 mm
Thread	M6
Halogen-free	yes
Length of external dimensions	33 mm
Max. Tightening torque	3 Nm
With metal trough	yes
Mounting type	Angle profile
Slot width	10 mm
Clamping range D, max.	40 mm
Clamping range D, min.	34 mm
Surface addition	hot galvanised
Material addition	Steel