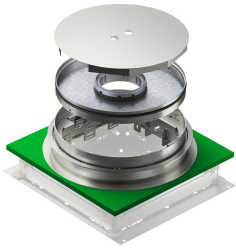


# Technical data sheet

## Height-adjustable, decouplable cassette for tube body, stainless steel

Item number: 7409497



Height-adjustable and decouplable round cassettes are suitable for flushfloor device installation in UGD-3 underfloor connection boxes. Depending on the design, they are suitable for dry, moist or wet-cleaned floors. The cassette rests on the fixing bracket fastened in the top frame of the box, using which the cassette can be adjusted to the top edge of the floor covering. The fixing bracket decouples the cassette from the raw ceiling. The connection socket must have an appropriate installation opening and, for this reason, needs a blanking lid with an appropriate installation opening. The cassettes are made from stainless steel or brass. All the cassettes contain a 4 mm thick sheet steel plate, for safe absorption of the traffic loads. The cassettes are available for different floor covering thicknesses of 20 and 25 mm.

Nivellierbare Kassette mit Tubus. Für den Einbau von 3 Universalträgern UT4 für 9 Einzel-Installationsgeräte mit Tragering/Tragebügel oder 12 Modul 45®-Geräte. Im Lieferumfang enthalten sind ein Estrichschutzdeckel aus Aluminium (überschleifbar), ein passender Montagedeckel zur Fixierung des Kassetten-Schalkörpers und eine ISO-Schürze zur Entkopplung von der Unterflur-Anschlussdose.



A2 Stainless steel

### Master data

Item number	7409497
Type	TRKRFN 9 VS 250
Description 1	Cassette for seamless floors
Description 2	round, tube body
Manufacturer	OBO
Dimension	Ø304x85
Material	Stainless steel 1.4301
Smallest sales unit	1
Unit of quantity	Piece
Weight	840.6 kg
Weight unit	kg/100 pc.

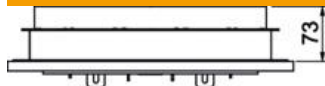
# Technical data sheet

Height-adjustable, decouplable cassette for tube body,  
stainless steel

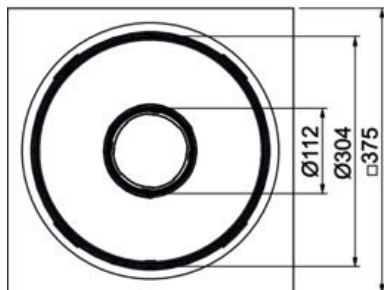
Item number: 7409497



## Dimensions



Height 85 mm



## Technical data

Number of installable devices	12
Number of cable outlets	1
Number of universal supports	3 x UT4
Version for	Round
Cable outlet version	Lowerable tube body
Floor care	Wet
Decouplable	yes
Screed height, max.	113 mm
Screed height, min.	73 mm
Floor height, min.	140 mm
Suitable for raised floor installation	no
Suitable for cavity floor installation	no
Suitable for	Underfloor socket structure
Suitable for underfloor box	250
Device support to accept mounting boxes	no
Nominal size for device installation units	R9
Height-adjustment range, max.	113 mm
Height-adjustment range, min.	73 mm
Standard	EN 50085-2-2
Protection rating (IP) when used	IP20
Protection rating (IP) when unused	IP44
Protection rating IK code	IK10
Heavy-duty version	no
Installation system type	UT4
Vertical load, large area	to 5,000 N
Vertical load, small area	to 3,000 N
Approvals	VDE
Floor covering thickness	25 mm